

Service
Service
Service



Service Manual

Horizontal Frequency
30-65 kHz

TABLE OF CONTENTS

Description	Page	Description	Page
Table Of Contents.....	1	6.Schematic.....	17
Revision List.....	2	6.1.Main Board.....	17
Important Safety Notice.....	3	6.2.Power Board.....	21
1.Monitor Specification.....	4	6.3.Key Board.....	23
2.LCD Monitor Description.....	5	7.PCB Layout.....	24
3.Operation Instruction.....	6	7.1.Main Board.....	24
3.1.General Instructions.....	6	7.2.Power Board.....	25
3.2.Control Button.....	6	7.3.Key Board.....	27
3.3.Adjusting the Picture.....	6	8.Maintainability.....	28
4.Input/Output Specification.....	9	8.1.Equipments and Tools Requirement.....	28
4.1.Input Signal Connector.....	9	8.2.Trouble Shooting.....	29
4.2.Factory Preset Display Modes.....	10	9.White-Balance Luminance adjustment.....	35
4.3.Panel Specification.....	10	10.Monitor Exploded View.....	37
5.Block Diagram.....	13	11.BOM List.....	38
5.1.Software Flow Chart.....	13	12.Different Parts List.....	51
5.2.Electrical Block Diagram.....	15		

SAFETY NOTICE

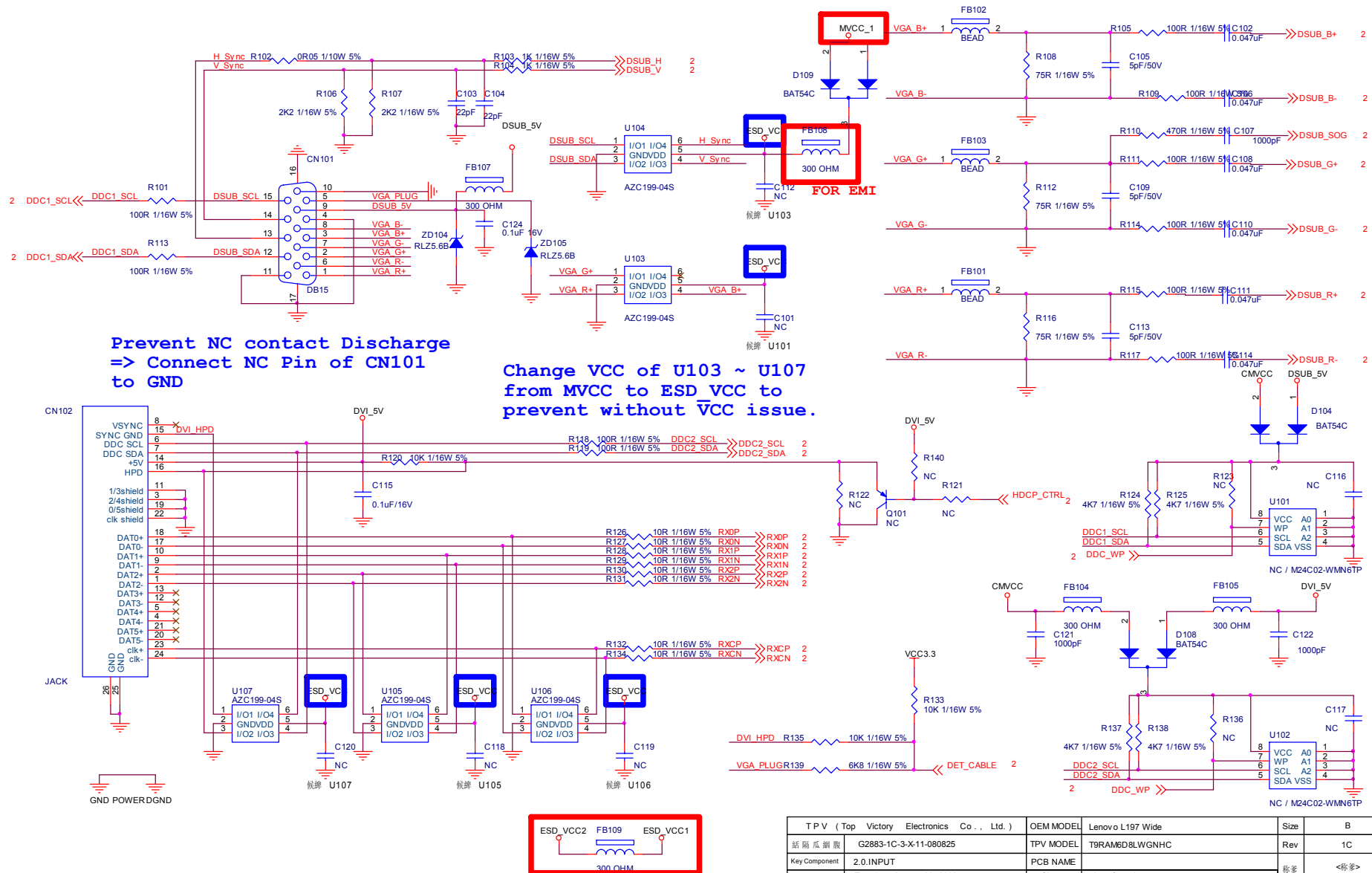
ANY PERSON ATTEMPTING TO SERVICE THIS CHASSIS MUST FAMILIARIZE HIMSELF WITH THE CHASSIS AND BE AWARE OF THE NECESSARY SAFETY PRECAUTIONS TO BE USED WHEN SERVICING ELECTRONIC EQUIPMENT CONTAINING HIGH VOLTAGES.

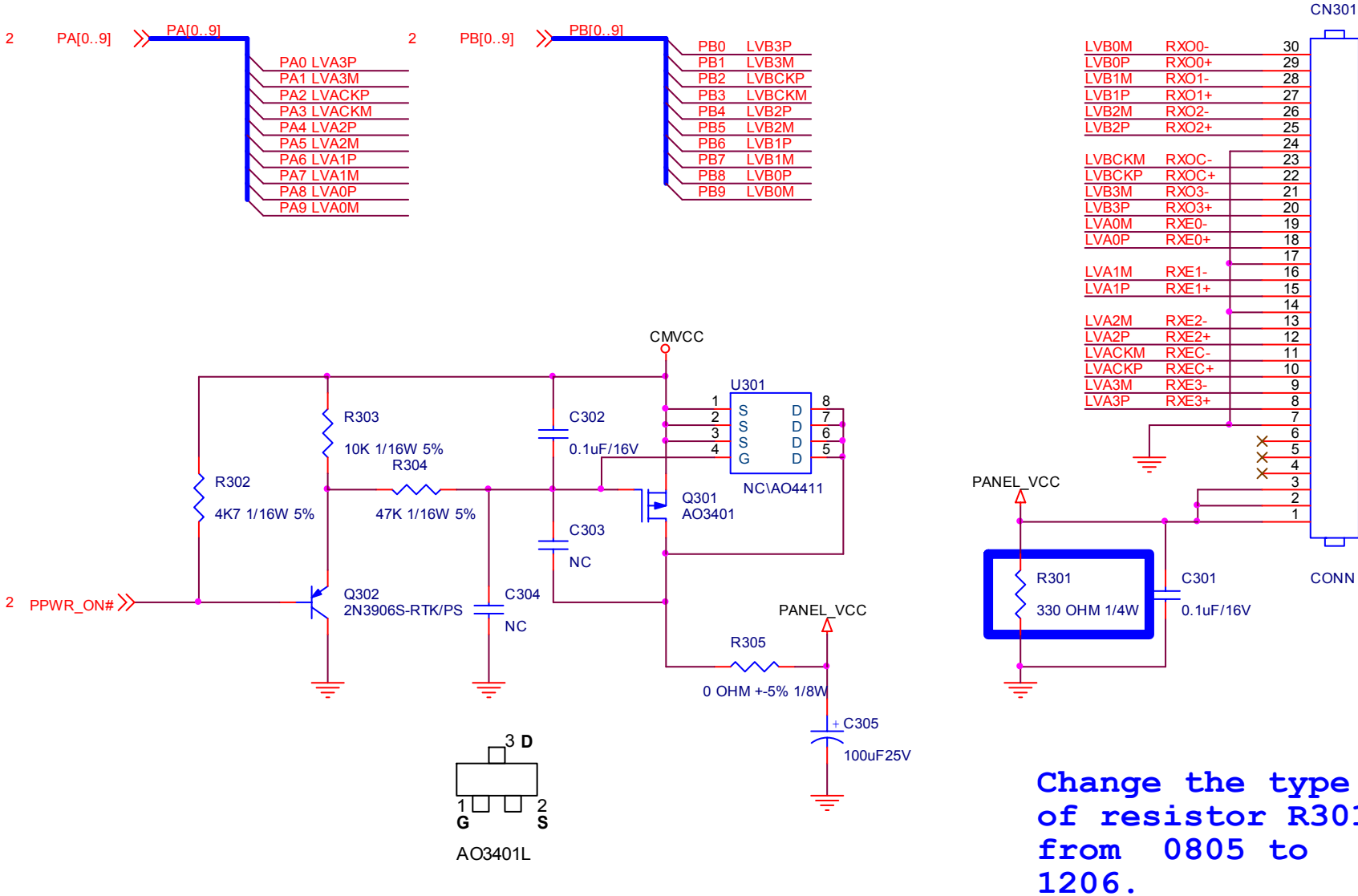
CAUTION: USE A SEPARATE ISOLATION TRANSFORMER FOR THIS UNIT WHEN SERVICING

6. Schematic

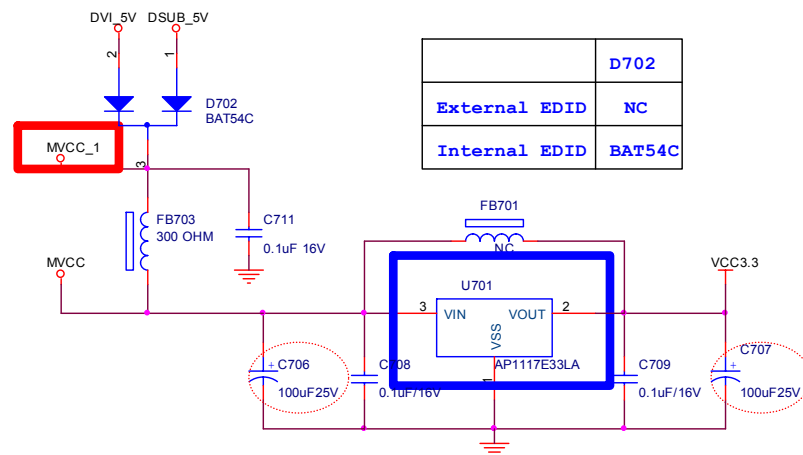
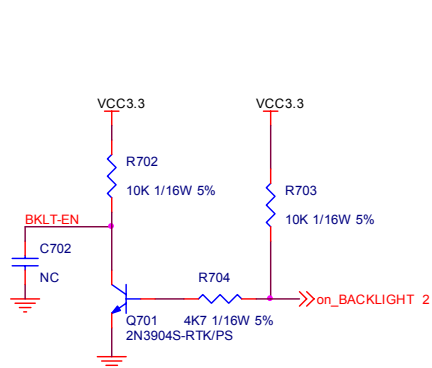
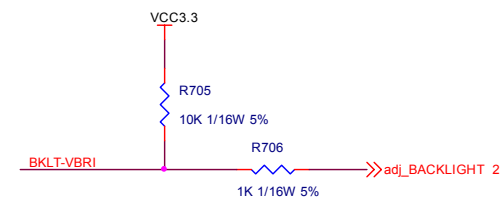
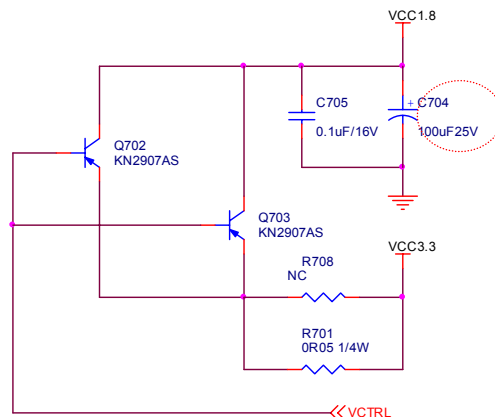
6.1 Main Board

715G2883 1 6





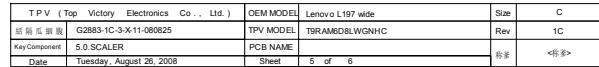
T P V (Top Victory Electronics Co. , Ltd.)		OEM MODEL	Lenov o L197 wide	Size	A
絛隔瓜網腹	G2883-1c-3-X-11-080825	TPV MODEL	T9RAM6D8LWGNHC	Rev	1C
Key Component	3.0.OUTPUT	PCB NAME		称爹	<称爹>
Date	Tuesday , August 26, 2008	Sheet	3 of 6		



Both 223 and 252
foot-print

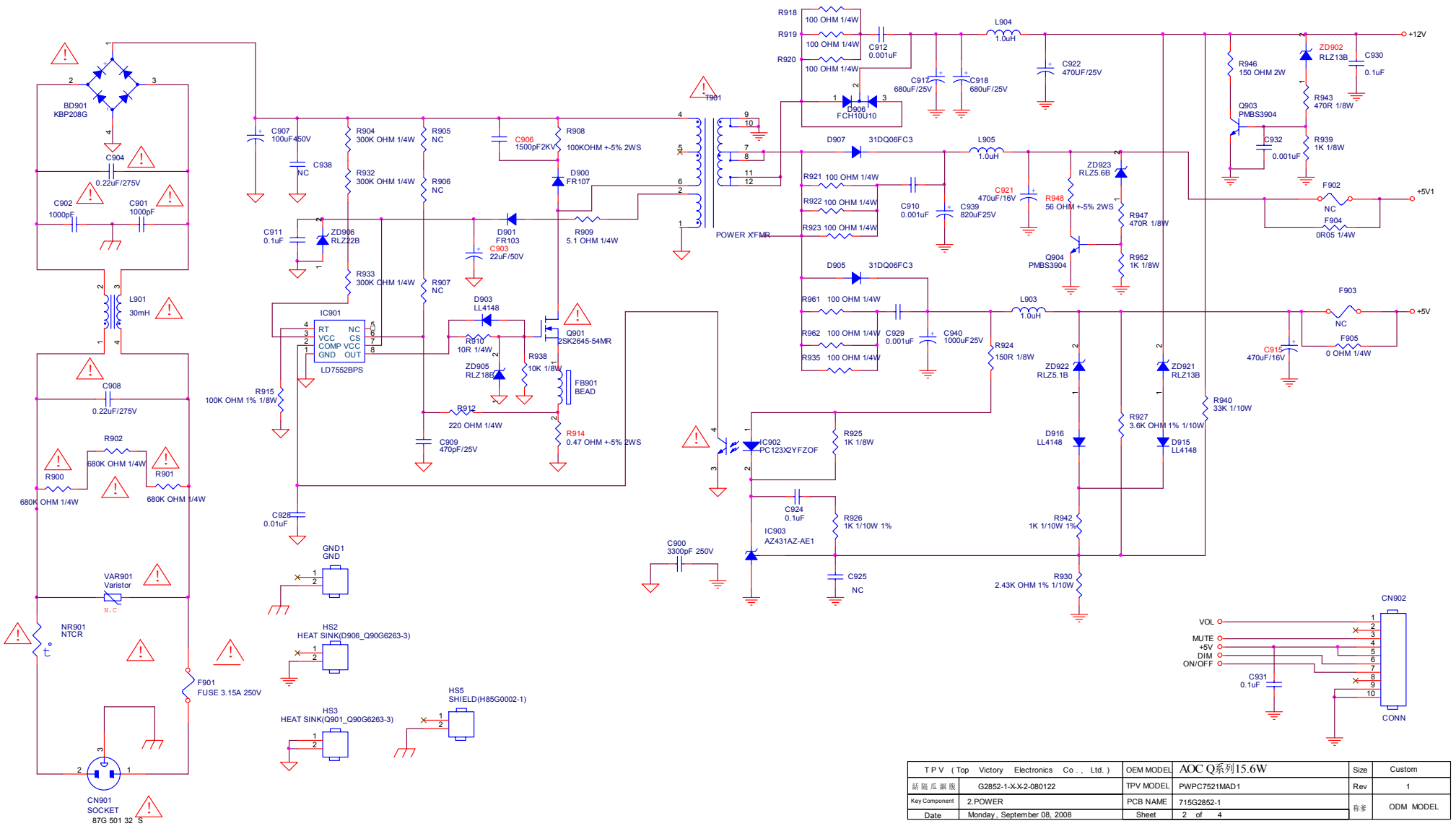
	R701	R708	U701
TSUM5PFHL	OR05 1/4W	NC	223
TSUMU58EHL	NC	3.3 OHM 2W	223
TSUMO58CWHL	NC	3.3 OHM 2W	252

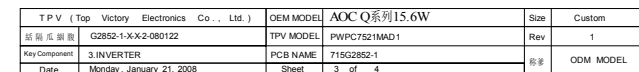
TPV (Top Victory Electronics Co., Ltd.)		OEM MODEL	Lenovo L197 wide	Size	B
話隔瓜網膜	G2883-1C-3-X-11-080825	TPV MODEL	T9R9M6D8LWGNHC	Rev	1C
Key Component	4.0.POWER	PCB NAME		脉爹	<脉爹>
Date	Tuesdav, August 26, 2008	Sheet	4 of 6		



6.2 Power Board

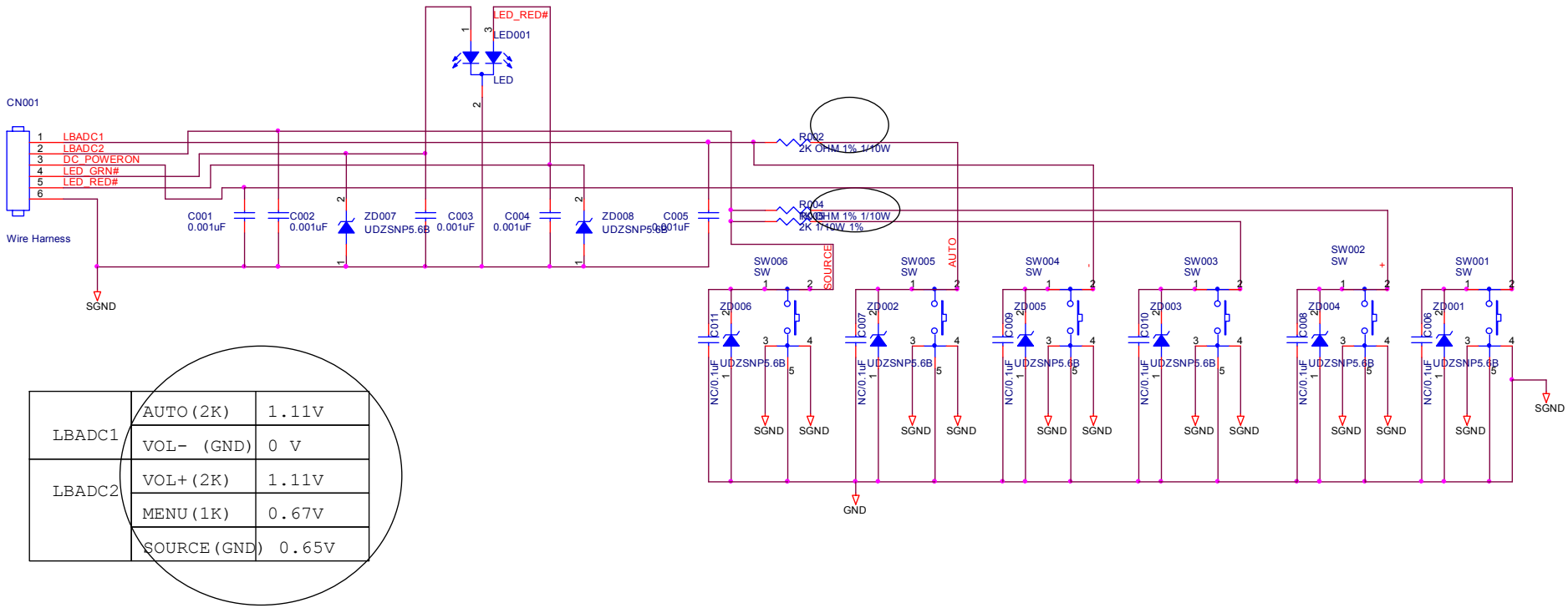
715G2852 2





6.3 Key Board

715G3362-B



T P V (Top Victory Electronics Co. , Ltd.)		OEM MODEL	Lenov o D185W	Size	B	
碣 隔 瓜 網 腹		G3362-1-X-X-1-081118	TPV MODEL	SMTKEPC8JC8	Rev	1
Key Component	Key board	PCB NAME	715G3362-1	称爹	<称爹>	
Date	Tuesday , Nov ember 18, 2008	Sheet	2 of 2			